

Strawberry

River

Sub-Watershed

Project

11-1100

Izard County Conservation District

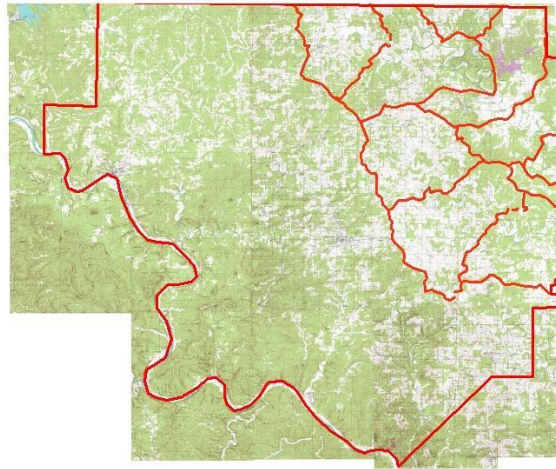
Arkansas Natural Resource
Commission

U.S. Environmental Protection
Agency

Izard County State Location Map



Izard County's Strawberry Sub- Watershed Map



Priorities for Planning

- All farms with riparian access along blue line streams as indicated on the 7.5 minute USGS quadrangle maps.
- All farms that lie within 1 mile of a blue line stream.

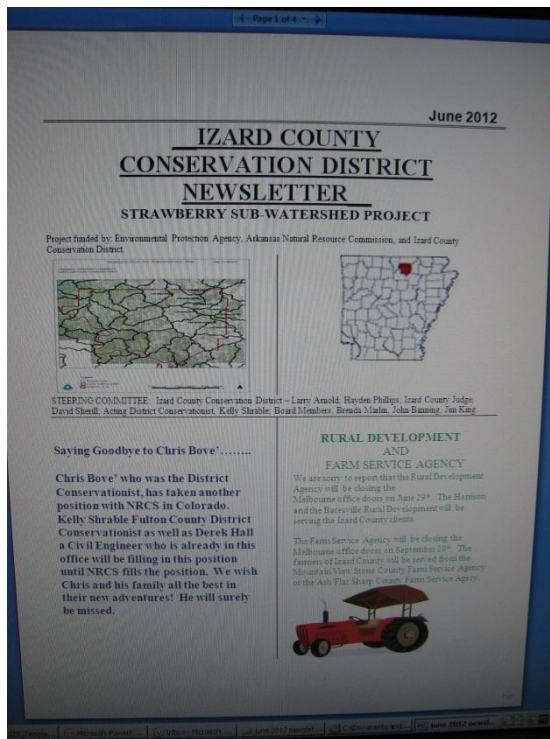
Getting the word out about the project

- Word of mouth
- Quarterly newsletter
- Fair Booths
- Annual field day/demonstration and landowner conference with 38 attending
- Equipment Rentals
- Newspaper
- Educational talks at schools

Equipment and Landowner Conf. & Field Day Demonstrations



Word of mouth Quarterly Newsletter & Fair Booths





Educational talks at Schools

We try to work with the area schools. We had coloring contests addressing conservation issues, and gave trees out to students.

Best Management Practices

- Fence 14,376 ft completed in FY 2013
- Fence 26,941 ft planned in FY 2013



Best Management Practices

- Watering Facilities =
12 planned
4 completed
- Pipeline =
5436 ft planned 2002
ft completed
- Heavy use
protection areas =
13 planned
4 completed



Best Management Practices

- Well=
 - 1 planned
 - 1 completed
- Pasture Planting =
 - 1 planned
 - 1 completed
- Pumping Plant =
 - 1 planned
 - 1 complete



Best Management Practices



Best Management Practices

- Access Control 36.4 acres
- Brush Management 1518 acres
- Pest Management 1770 acres
- Nutrient Management 905 acres
- Prescribed Grazing 2388 acres

Conservation Plans

- 44 Conservation Plans written on 6617 acres.

Contracts

- 3 Contracts written in the last 12 months
- 3 Contracts completed within the last 12 months
- \$47,948.00 paid to landowners for installing BMP'S
- \$65,982.00 Match made by the landowners by installing BMP'S